

Manatee County
Comprehensive Plan
Community Workshop

Kimley»»Horn



Today's Agenda

1. Welcome & Introductions
2. Project Schedule
3. Comprehensive Plan Highlights
4. Interactive Stations

What is the Comprehensive Plan?

A set of policies intended to serve as the Community's Vision and to guide the development of a community, typically over a 10–20-year period.

- Existing Plan Analysis

- Review of State Statutes (*what's changed since the last plan update*)

- Public Engagement

- Update Goals, Objectives, and Policies


- Public Hearings

- Local Planning Agency (Planning Commission)
- Board of County Commissioners

CHAPTER 1 FUTURE LAND USE ELEMENT GOALS, OBJECTIVES AND POLICIES	
Goal 1-1:	Ensure that the character, magnitude, and location of all land uses within the City of Tavares provides a system for orderly growth and development that achieves a balanced natural, physical, and economic environment, and enhances the quality of life of all residents through the year 2020 at which time the Comprehensive Plan will be updated to reflect a new ten year planning horizon.
Objective 1-1.1:	The City shall continue to implement and enforce land development regulations in a unified land development code in a manner to effectively guide and manage future growth. The Code shall implement the minimum standards and criteria as described in the Plan's Objectives and Policies as adopted and will regulate: all land uses shown on the Future Land Use Map, the subdivision of land, the location, size and the height of signage, and areas subject to seasonal or periodic flooding, transportation issues, conservation issues, coordination of land uses with appropriate topography and soils conditions and levels of service criteria. The Land Development Code shall contain directives that utilize innovative land development regulations.
Policy 1-1.1.1:	The City shall maintain and enforce as part of the adopted unified Land Development Code, Ordinances which shall preserve wetlands. Wetlands hereby will be defined as: "Wetlands" means those areas that are inundated or saturated by surface water or ground water at a frequency and a duration sufficient to support, and under normal circumstances do support, a prevalence of vegetation typically adapted for life in saturated soils. Soils present in wetlands generally are classified as hydric or alluvial, or possess characteristics that are associated with reducing soil conditions. The prevalent vegetation in wetlands generally consists of facultative or obligate hydrophytic macrophytes that are typically adapted to areas having soil conditions described above. These species, due to morphological, physiological, or reproductive adaptations, have the ability to grow, reproduce or persist in aquatic environments or anaerobic soil conditions. Florida wetlands generally include swamps, marshes, bayheads, bogs, cypress domes and strands, sloughs, wet prairies, riverine swamps and marshes, hydric seepage slopes, tidal marshes, mangrove swamps and other similar areas. Florida wetlands generally do not include longleaf slash pine flatwoods with an understory dominated by saw palmetto. The delineation of actual wetland boundaries may be made by any professionally accepted methodology consistent with the type of wetlands being delineated but shall be consistent with any unified statewide methodology for the delineation of the extent of wetlands ratified by the Legislature.
Policy 1-1.1.2:	The City of Tavares will establish and maintain Land Development Regulations that will prohibit all development or improvement in areas established as wetlands. The only exceptions to this policy will be for uses/improvements allowed in the Conservation Element of this Comprehensive Plan by Special Exception.
Policy 1-1.1.3:	The City shall continue to maintain and enforce within the adopted unified land development code specific ordinances which provide for drainage and stormwater management, open space, and protect potable water well fields and aquifer recharge areas.
Future Land Use Element Goals, Objectives and Policies	1-1 Adopted June 6, 2001 Last Amended: Ord. 2018-04

The Comprehensive Plan...

- Coordinates analysis of Transportation, Land Use, Infrastructure
- Is a key opportunity to create and implement the Vision
- Creates the framework for Land Development Code updates
- Is developed in a public process



Economic Vitality

Encouraging Job Creation

Promoting Tourism / Industry / Retail

Where to Locate New Businesses

The graphic features a red background with a white bar chart showing an upward trend, topped with an arrow pointing to the right.



Parks & Recreation Areas

Creating New Parks and New Amenities

Improving Existing Parks

Preserving Natural Resources

The graphic features a green background with white icons of a tree, a playground structure, and a person playing soccer.



Community Character

Encouraging an Appropriate Development Pattern

Evaluating Location & Types of Development

Guiding Redevelopment

Protecting Cultural Assets

The graphic features an orange background with white icons of a multi-story building and a house.



Transportation

Improving Roadways

Parking Facilities

Accommodating Facilities for Bicycles & other Modes

Better Pedestrian & Sidewalk Connections

The graphic features a blue background with white icons of a bus, a person walking, and a person riding a bicycle.

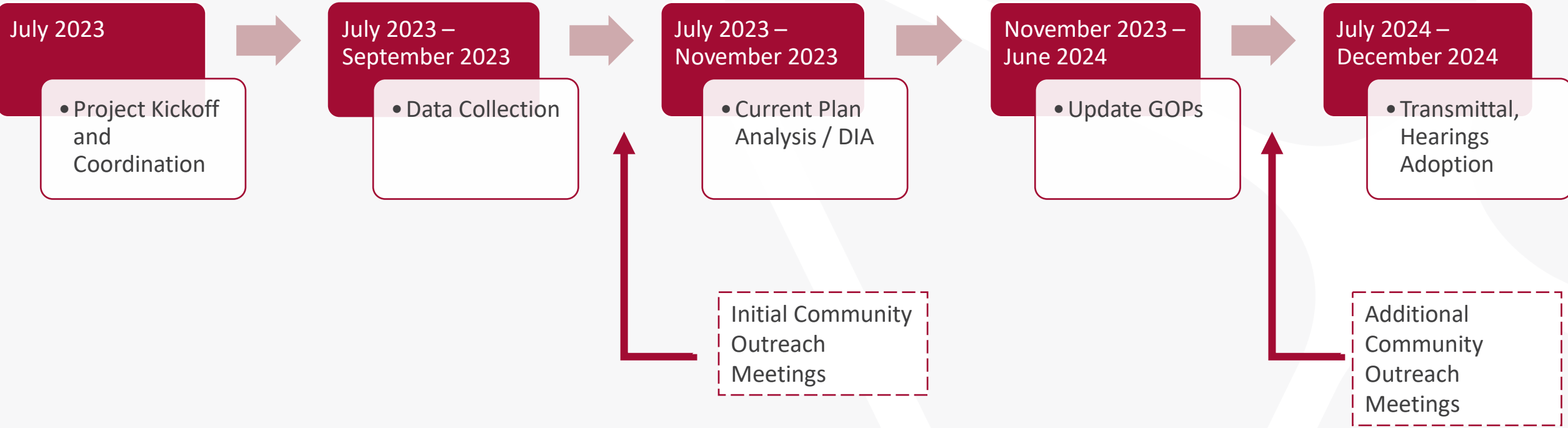
Two Points to Remember:

*“It is **not** the intent of this part to require the inclusion of implementing **regulations** in the comprehensive plan but rather to require identification of those programs, activities, and land development regulations that will be part of the strategy for implementing the comprehensive plan and the principles that describe how the programs, activities, and land development regulations will be carried out.”*

*“The format of these principles and guidelines is at the discretion of the local government, but typically is expressed in **goals, objectives, policies, and strategies.**”*

Florida Statutes Ch. 163.3177

Project Schedule



Analysis

What will be analyzed?

- Traffic/ Transportation
- Potable Water
- Sanitary Sewer
- Stormwater
- Parks and Recreation Facilities
- Population
- Land Use (existing and future)



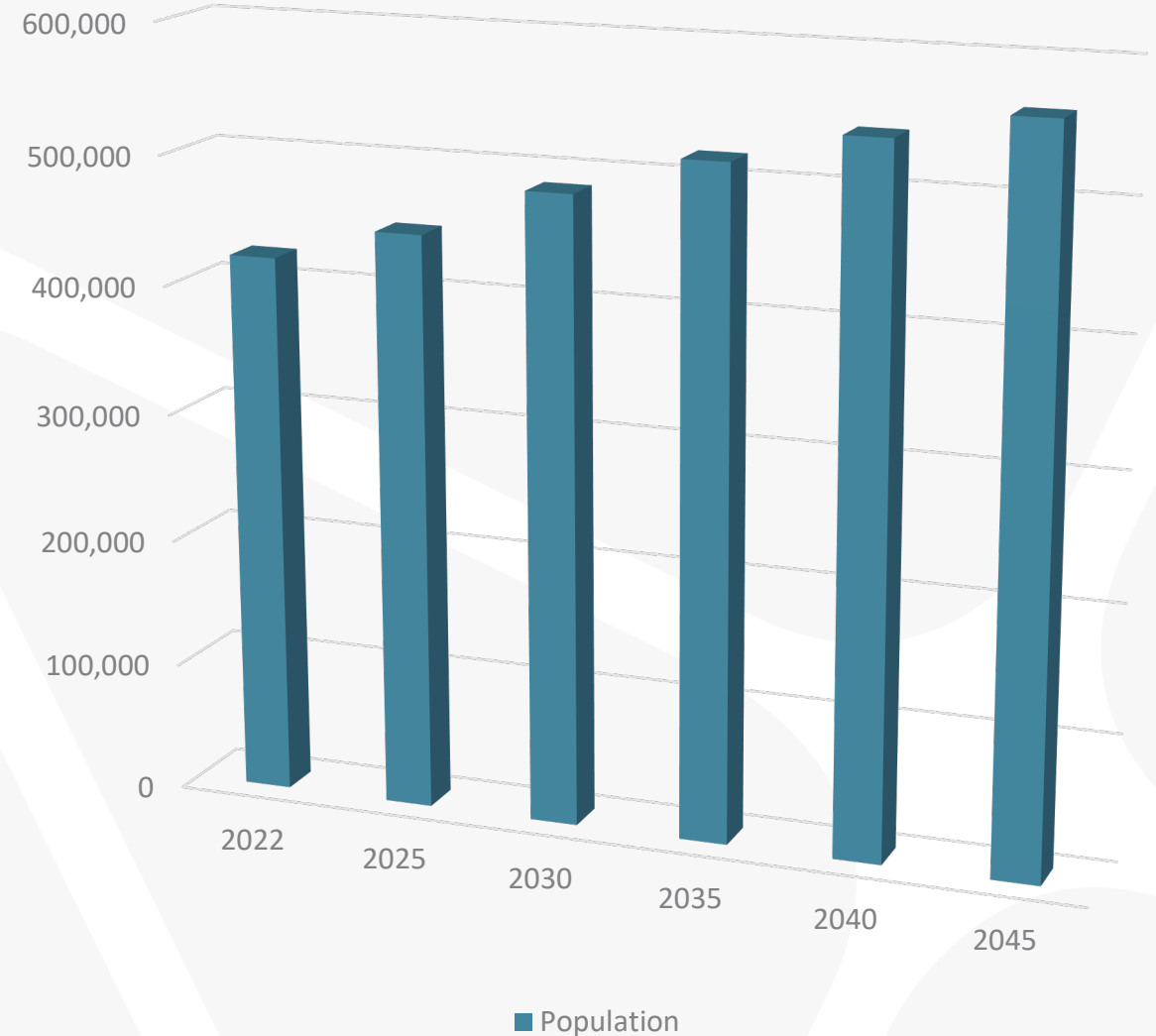
Comprehensive Plan Elements

- **Future Land Use**
- **Conservation**
- **Coastal Management**
- **Transportation**
- **Housing**
- Historical and Cultural
- **Recreation and Open Space**
- Public Facilities
- Capital Improvements
- Intergovernmental Coordination
- *Public School Facilities*
- Property Rights



Population Trends

Year	Population
2022	421,768
2025 (est.)	447,800
2030 (est.)	486,300
2035 (est.)	517,300
2040 (est.)	541,600
2045 (est.)	562,300



Source: U.S. Census; Bureau of Economic and Business Research

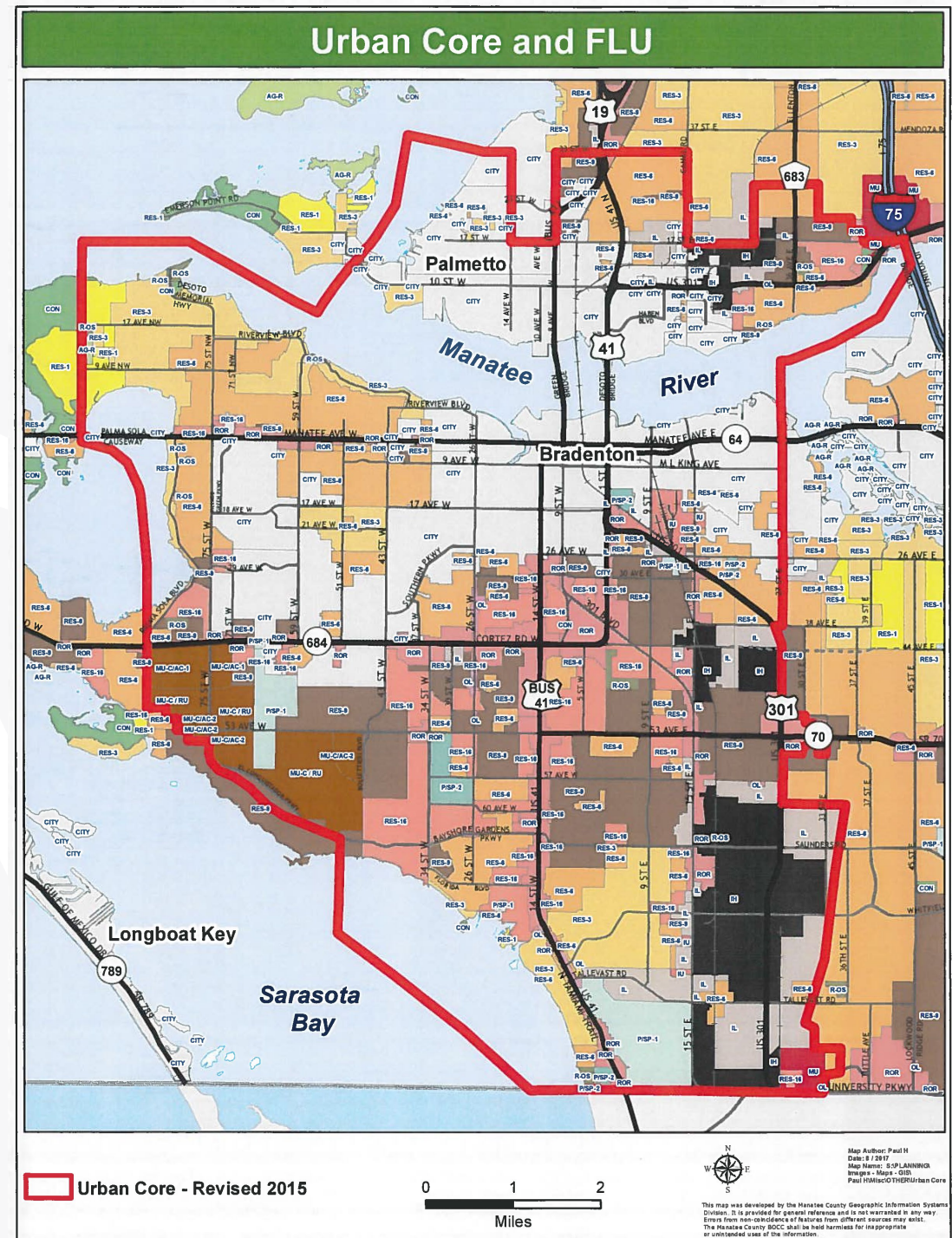
Land Use

- Future Land Use: What the County “envisions” and supports for future development
- Existing Land Use: What is on the “ground” right now
- Vacant Land Use: Land that is not developed or underdeveloped (and what is its development potential)



Future Land Use

- Proposed future general distribution, location, and extent of the uses
- Range of density and intensity of use for each category



Conservation

Goal: To protect air quality, surface and groundwater, in addition to natural floral and faunal resources while preventing the release of toxic amounts of hazardous substances and promoting alternative energy.



Coastal Management

Goals:

- Protection, Preservation, and Enhancement of the Natural Resources of the Coastal Planning Area to Provide the Highest Environmental Quality Possible.
- Protection of the Residents and Property Within the Coastal Planning Area from the Physical and Economic Effects of Natural Disasters.



Transportation

- **Traffic Goal:** A Multimodal Transportation System that Serves to Increase Mobility, is Safe, Convenient, Efficient, and Meets Present Needs, Protects Roadway Capacity, is Coordinated with the Future Land Use Map, Provides for an Affordable Balance of Alternative Transportation Modes, and Encourages Intermodal Transportation Linkages.
- **Transit Goal:** A Full Range of Transportation Alternatives for Residents and Visitors with a Safe, Efficient, Attractive, and Financially-Feasible Transit System, Acting as the Primary Alternative to the Single Occupant Automobile.
- **Additional Port and Aviation Sub-Elements:** including FS 333 Compliance

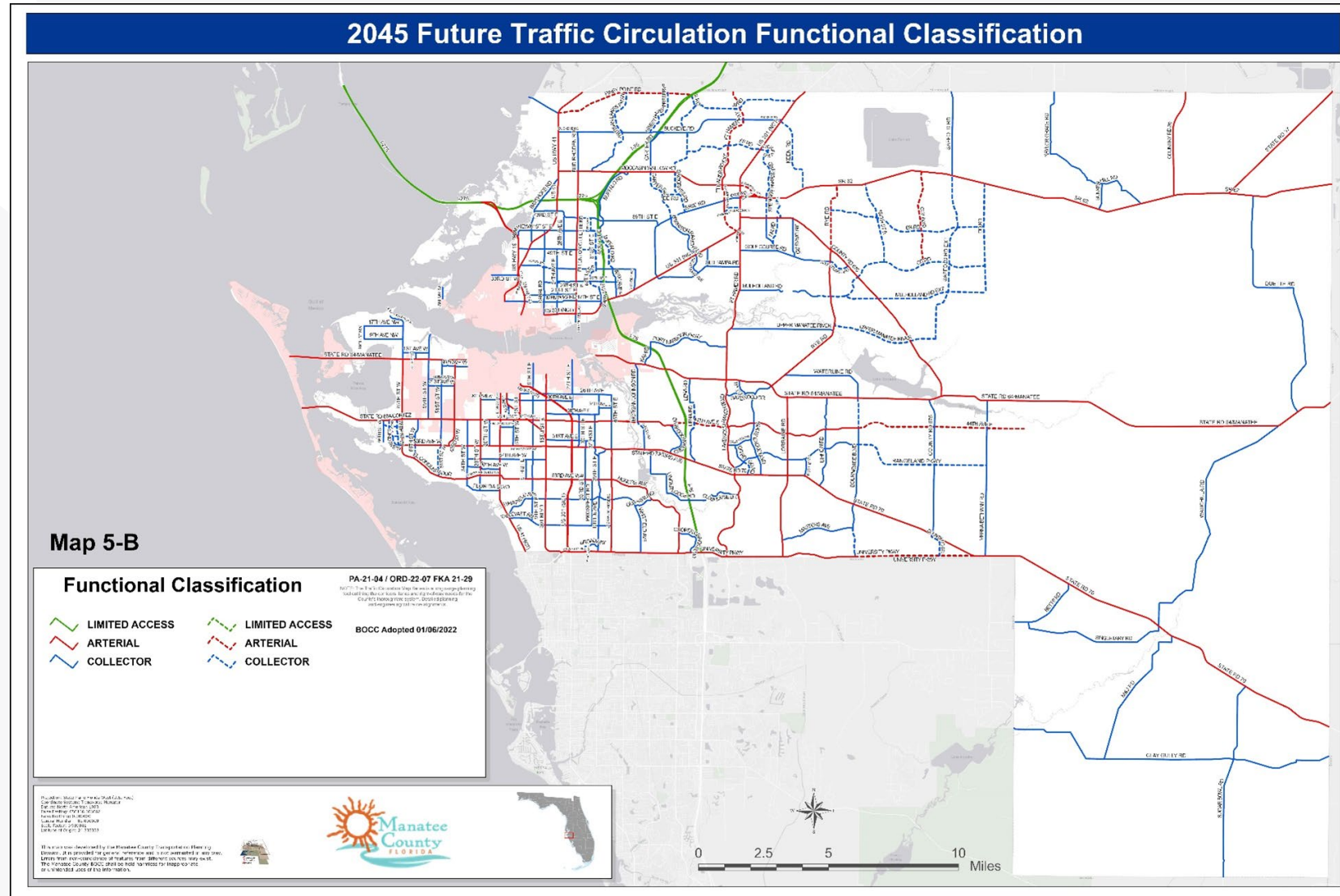


Transportation

- Level of Service Standards for Roadways

Objective 5.1.2. - Level of Service Standards.

Implement adopted roadway Level of Service (infrastructure) Standards for review of proposed development orders, for use in capital improvements programming, and for quantifying the long-range goals for operation of major roadways.



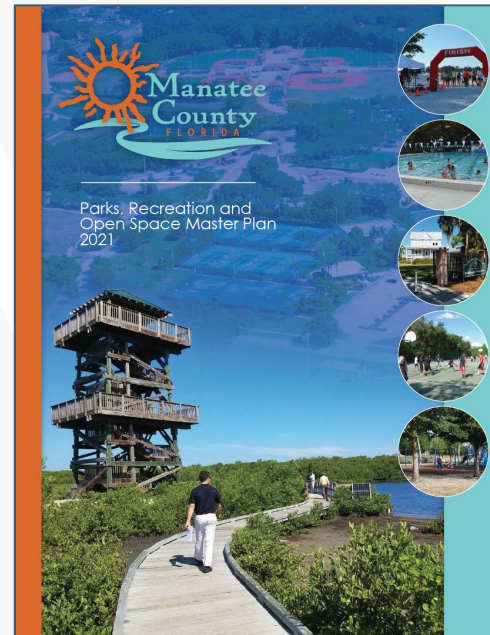
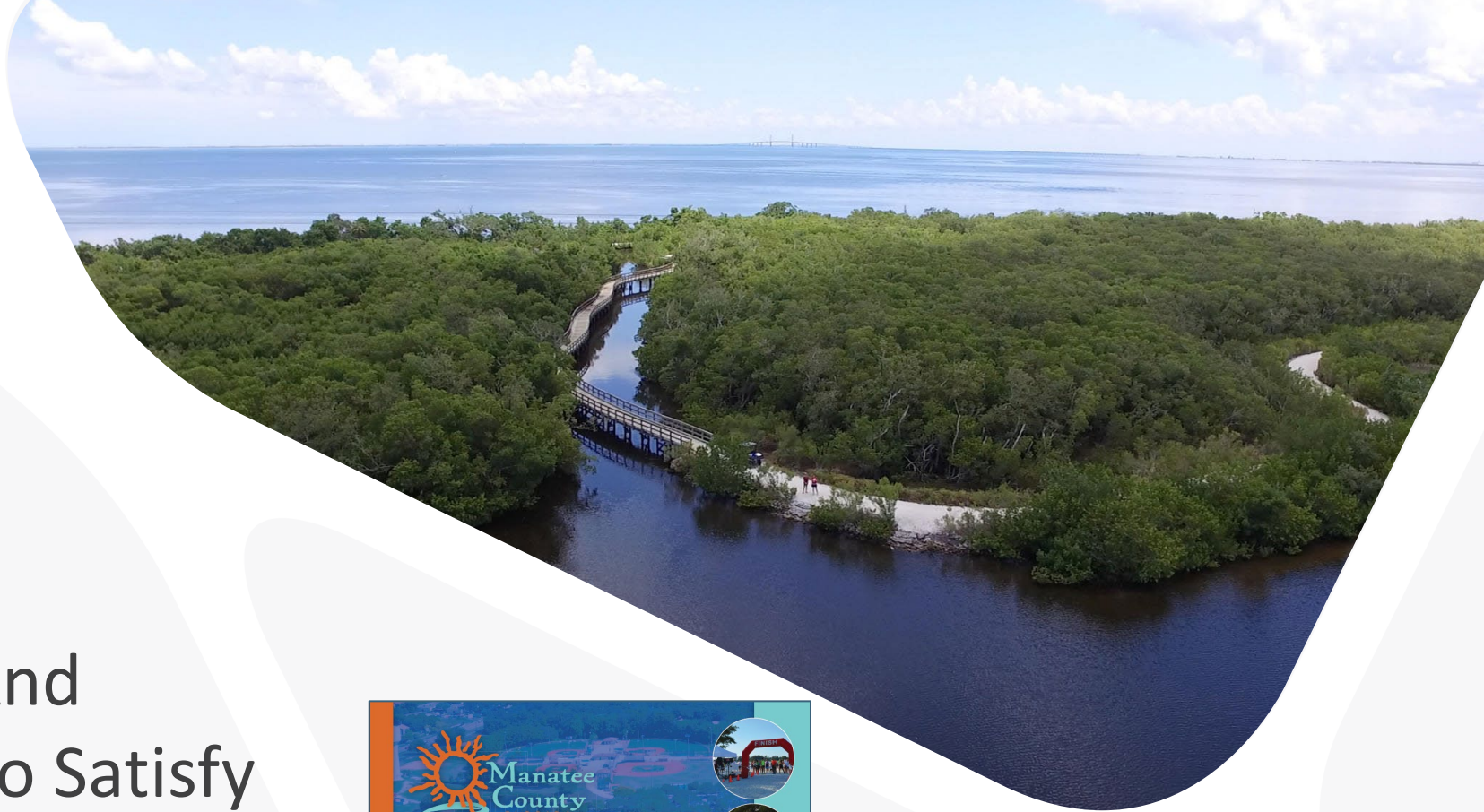
Housing

Goal: A County with a Variety of Housing Opportunities for All Manatee County Residents, Recognizing that Affordable Living Requires Affordable Housing, Near Employment, Shopping, Services and Alternative Transportation, with an Emphasis on the Needs of the Financially Disadvantaged, and the Special Needs Populations.



Recreation and Open Space

Goal: Sufficient Parks And Recreational Facilities to Satisfy the Recreational Needs Of Manatee County Residents For All Types Of Recreational Activities, with multi-modal access.



Public Facilities

Goals:

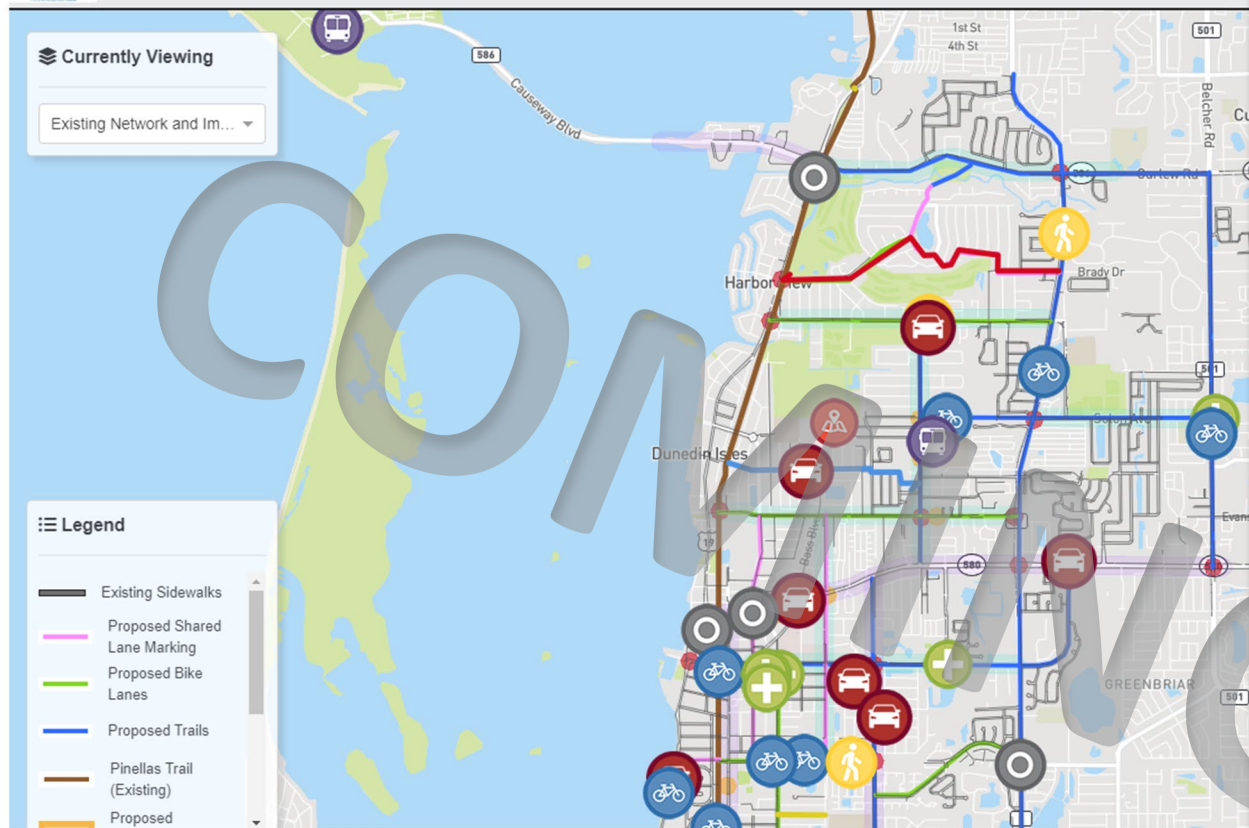
- Provision of Regional Sanitary Sewer and Wastewater Systems
- Provision of Solid Waste Disposal Facilities and Services and Recycling Technologies to Serve Existing and New Development.
- Stormwater Management Standards and Facilities Which Reduce Flooding and Improve Water Quality in Manatee County.
- Ensure Adequate Supply, Treatment, and Delivery of Potable Water For All Retail and Wholesale Customers of Manatee County Within the Potable/Wastewater Service Areas.



Other Elements

- Historical and Cultural
- Public Facilities
- Capital Improvements
- Intergovernmental Coordination
- *Public School Facilities*
- Property Rights





PublicCoordinate

Leverage diverse perspectives to guide your project to success.

PublicCoordinate shares project information with the public and gathers comments/feedback online and interactively in a user-friendly map-based platform.

PUBLIC-FRIENDLY

- Map text can be translated to multiple languages
- Customizable welcome text box provides instructions to map users
- Mobile-, tablet-, and desktop-friendly interface
- Meets web accessibility guidelines that state and federal agencies are required to adhere to, unlike most other platforms

CUSTOMIZABLE

- Offers multiple comment types, including point-specific comments and drawing a route
- Integrates seamlessly with SurveyMonkey to display custom surveys within the map sidebar
- Provides the ability to toggle between multiple underlying base maps including aerial, street, and custom base maps
- Custom branding to show project/client logos and display the project name

SECURE

- Increased security with reCAPTCHA box and optional email address requirement in order to post a comment to prevent spam comments
- Built-in prohibited words list restricts the usage of inappropriate words in the comments

EFFICIENT

- Provides the ability to toggle between multiple project alternatives/phases in one map and automatically assigns comments to specific project alternative/phase
- Exports formatted reports on activity and comments with summary analytics on comments and types

Public Coordinate

- Welcome to PublicCoordinate, Kimley-Horn's proprietary interactive mapping software!
- PublicCoordinate shares project information with the public and gathers comments/feedback online in a user-friendly map-based platform.

Interactive Stations

County-Wide

Three Different Activities

- One Word
- Ranking
- Mapping Exercise

Plus: Provide any other comments you have!



Interactive Stations

ONE WORD

For the entirety of Manatee County



*Manatee County
Comprehensive Plan Update*

One word that describes
Manatee County **TODAY**...

*Manatee County
Comprehensive Plan Update*

One word that describes
MY VISION for Manatee County...

Interactive Stations

RANKING

What are your priorities for Manatee County?



housing



transportation



land use & development



environmental conservation



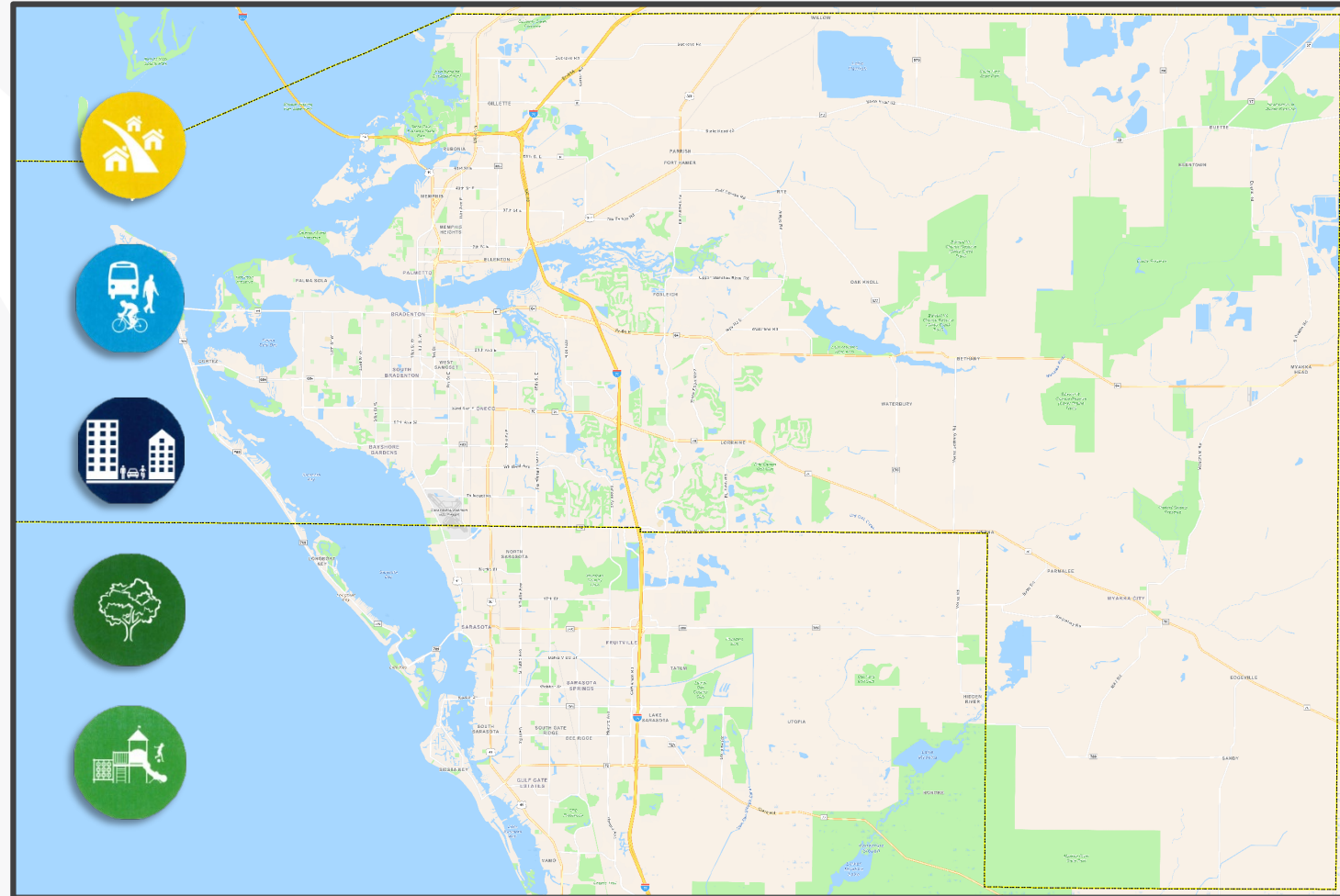
parks & recreation areas

Interactive Stations

MAPPING EXERCISE

Within the County; let us know where you would like to see...

- *Housing*
- *Transportation Infrastructure*
- *Development*
- *Conservation*
- *Parks and Recreation*



Stay Involved!



For more information, contact:

Bill O'Shea
(941) 748-4501 Ext. 3841
bill.oshea@mymanatee.org